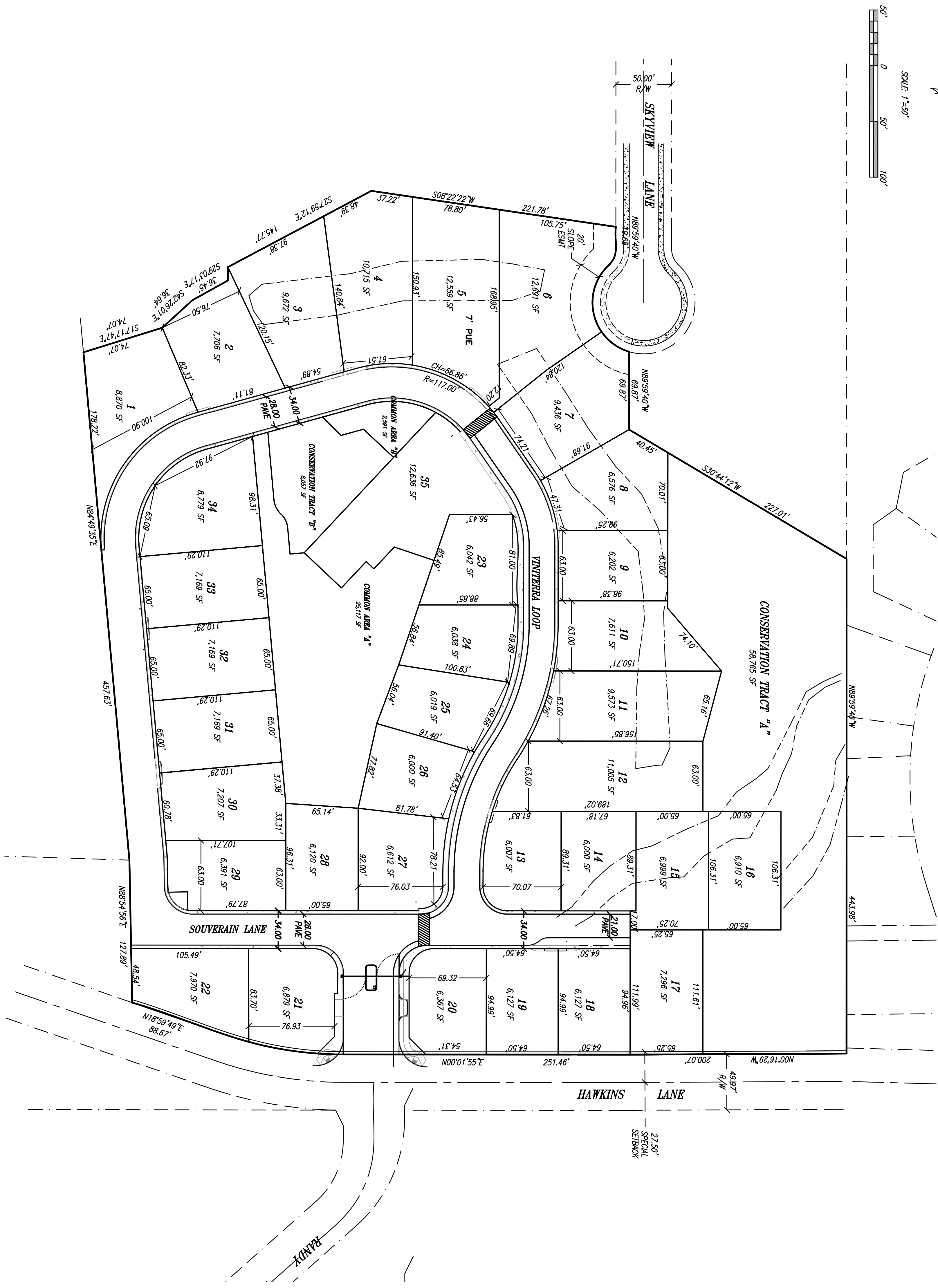
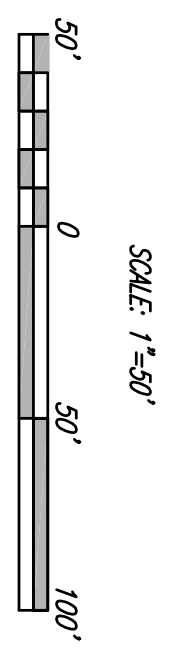
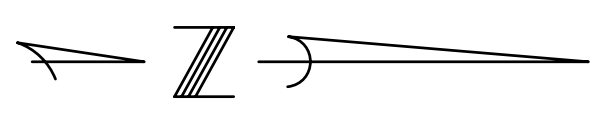


TENTATIVE PLANNED UNIT DEVELOPMENT

FOR
HAWKINS VIEW RESERVE

18-04-11-21
TAX LOTS 5800 & 5801
EUGENE, LANE COUNTY, OREGON
SURVEYED: FEBRUARY 2008



SHEET INDEX

S1	SITE PLAN
T1	TREE PROTECTION PLAN
C1	SITE GRADING PLAN NORTH
C2	SITE GRADING PLAN SOUTH
C3	SITE UTILITY PLAN NORTH
C4	SITE UTILITY PLAN SOUTH
C5	STORM MANAGEMENT PLAN
C6	STORMWATER DRAINAGE BASINS MAP
C7	SITE MANAGEMENT PLAN
C8	CIVIL DETAILS
L1	PRELIMINARY LANDSCAPE PLAN

PROFESSIONAL DESIGN TEAM
WE HEREBY CERTIFY THAT WE HAVE PARTICIPATED IN THE DESIGN PROCESS IN ACCORDANCE WITH ALL ACCEPTABLE P.U.D. REQUIREMENTS.

PROJECT COORDINATOR/PLANNER
JED TRUETT, AICP
METRO PLANNING, INC
370 Q ST
SPRINGFIELD, OR 97477
(541)302-9830, FAX (541)610-1805

SURVEYOR/ENGINEER
LARRY OLSON, PLS
SCOTT MORRIS, PE
OLSON & MORRIS
380 Q ST SUITE 200
SPRINGFIELD, OR 97477
(541)302-9790, FAX: (541)485-3253

LANDSCAPE ARCHITECT
DAVID DOUGHERTY, LA
DOUGHERTY LANDSCAPE ARCHITECTS
474 WILLAMETTE ST, STE 305
EUGENE, OR 97401
(541)683-5803

ARBORIST
KYLE KING, CERTIFIED ARBORIST
85192 S WILLAMETTE STREET
EUGENE, OREGON 97405
(541) 345-4597

KYLE KING, CERTIFIED ARBORIST

LEGEND

	BOUNDARY
	CENTERLINE
	ADJACENT LOT LINE
	ORIGINAL TAX LOT LINE

SITE DATA

TOTAL AREA	431,245 SF
PROPOSED CONSERVATION TRACTS	94,692 SF
PROPOSED STREET AREA	63,300 SF
PROPOSED TOTAL LOT AREA	273,253 SF



REVISIONS:

DATE: APRIL 28, 2008
PROJECT NO: 07-032

SCALE: HORIZ: 1" = 50'
VERT:

REVIEWED BY:

REVIEWED BY:

REVIEWED BY:

COA:

COVER SHEET
FOR
HAWKINS VIEW RESERVE

EUGENE LANE COUNTY OREGON

COVER SHEET

Metro Planning 370 Q ST SPRINGFIELD, OR. 97477 PHONE: (541) 302-9830 FAX: (541) 610-1805 jed@metroplanning.com	Land Use Planning & Consulting